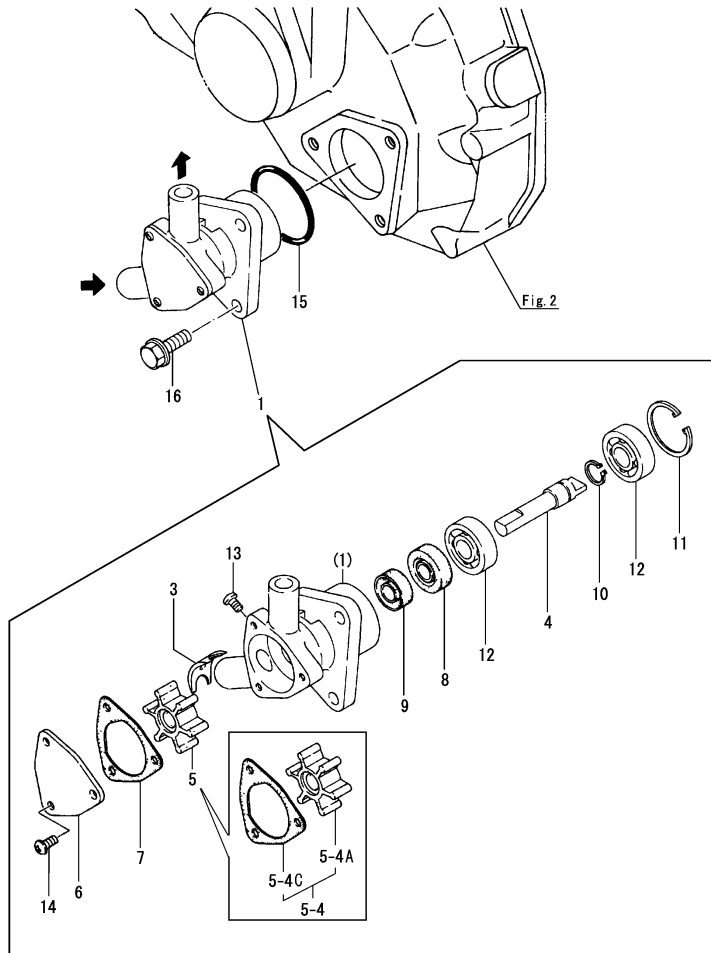


Fig.30. COOLING PUMP(SEA WATER)

(A)=1GM10(YMI)
(B)=1GM10C
(C)=1GM10

(D)=1GM10VE
(E)=1GM10L
(F)=



No.	Lev.	Parts No.	Description	Q'ty						I	R
				(A)	(B)	(C)	(D)	(E)	(F)		
1	1	128170-42000	PUMP ASSY, WATER	1	1	1		1			
1-1	1	128170-42200	PUMP ASSY, WATER	1	1	1	1	1			N
		(A=E12740) (B=E01385) (C=E01195)		(E=E00731)							
3	2	128170-42050	CAM, PUMP	1	1	1		1			1
4	2	128170-42060	SHAFT, WATER PUMP	1	1	1	1	1			
5	2	128170-42070	IMPELLER	1	1	1	1	1			
5-1	2	128176-42070	IMPELLER	1	1	1	1	1			R
		(A=*1995.07.) (B=*1995.07.) (C=*1995.07.) (D=*1995.07.)		(E=*1995.07.)							
5-2	2	128176-42071	IMPELLER, PUMP	1	1	1	1	1			N
		(A=*1997.09.) (B=*1997.09.) (C=*1997.09.) (D=*1997.09.)		(E=*1997.09.)							
5-3	2	128176-42080	IMPELLER KIT	1	1	1	1	1			N
		(A=*2016.12.) (B=*2016.12.) (C=*2016.12.) (D=*2016.12.)		(E=*2016.12.)							
5-4	2	128176-42090	IMPELLER KIT	1	1	1	1	1			N
		(A=*2018.09.) (B=*2018.09.) (C=*2018.09.) (D=*2018.09.)		(E=*2018.09.)							
5-4A	3	128176-42080	IMPELLER KIT	1	1	1	1	1			W
		(A=*2018.09.) (B=*2018.09.) (C=*2018.09.) (D=*2018.09.)		(E=*2018.09.)							
5-4C	3	128170-42090	GASKET, END COVER	1	1	1	1	1			W
		(A=*2018.09.) (B=*2018.09.) (C=*2018.09.) (D=*2018.09.)		(E=*2018.09.)							
6	2	128170-42080	COVER, WATER PUMP	1	1	1	1	1			
7	2	128170-42090	GASKET, END COVER	1	1	1	1	1			Z
8	2	128170-42110	SEAL, OIL TC8227	1	1	1	1	1			
9	2	124240-91450	SEAL, OIL	1	1	1		1			
9-1	2	128170-42120	SEAL, OIL TC8187	1	1	1	1	1			N
		(A=E06896) (B=E00700) (C=E00697)		(E=E00293)							
10	2	22242-000100	RING, 10	1	1	1	1	1			
11	2	22252-000260	RING, 26	1	1	1	1	1			
12	2	24101-060004	BEARING, BALL 6000	2	2	2	2	2			
13	2	26554-040062	SCREW, M4X 6	1	1	1		1			1
14	2	26554-040082	SCREW, M4X 8	3	3	3		3			
14-1	2	26113-040082	BOLT, M4X 8	3	3	3	3	3			N
		(A=E12740) (B=E01385) (C=E01195)		(E=E00731)							
15	1	24321-000350	O-RING, 1AG35.0	1	1	1	1	1			
16	1	26106-060182	BOLT, M6X 18 PLATED	3	3	3	3	3			

Remarks

(1)For No.1(Not used for No.1-1)